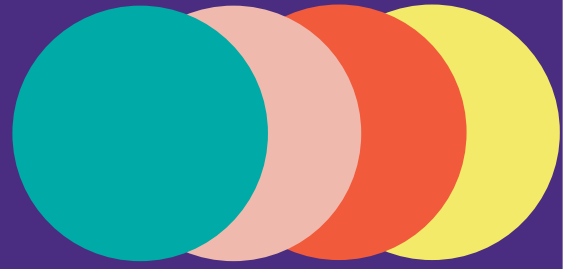


FORGED

A Peer Support Group

Fostering Others to Restore, Guide, Educate, and Develop their own wellbeing



Opportunity for All South Dakota Youth

Are you between the **ages of 16 and 19** and interested in:

- ✓ Helping your community?
- ✓ Providing your expert opinion as a teen in SD?
- ✓ Meeting peers with similar interests?
- ✓ Looking for experiences to add to a resume or application?
- ✓ Receiving awesome rewards for participation?

Key Features:

The peer support group is a state-wide network of youth and supportive adults.

The peer support group will meet monthly to discuss public health issues facing youth today, such as **Mental Health, Suicide Prevention, Healthy Relationships, and Sexual Health.**

*Participation is voluntary; Guardian consent is needed for youth under 18.

Meetings:

2nd Wednesday of each month,

in person or Zoom

Time: 3:30 MST/4:30 CST

For more information:

Email the REACH team: ILS-Reach@LssSD.org

Visit the REACH website: REACH.LssSD.org



Fill out this application to join!



REACH programming was made possible by Funding Opportunity Number HHS-2016-ACF-ACYF-SR-1197 from the Department of Health and Human Services, Administration for Children and Families. Its contents are solely the responsibility of Lutheran Social Services and do not necessarily represent the official views of the Department of Health and Human Services, Administration for Children and Families.

Future FORGED Opportunities

- Provide feedback on Sexual Health & Healthy Relationship programming:
 - Class content
 - Program rewards
 - Resources provided to youth
 - Pilot new programs
- Evaluate community services for teen friendliness:
 - Title X Focus Groups
 - Family Planning Clinics
 - Emergency Services
- Learn leadership skills:
 - Advocacy movie nights
 - FORGED Member Recruitment
 - Networking
 - Public Speaking
- Community-Building activities:
 - Create a promotion for Sexual Health & Healthy Relationship programs
 - Coordinate YMHA trainings for teens
 - Promote health and wellbeing through Social Media
- Pursue your goals: _____

Participants will receive \$25 gift card per meeting

\$50 gift card per public event

& snacks at every in person meeting

MEET PEERS—HELP YOUR COMMUNITY—BE THE EXPERT—EARN



REACH programming was made possible by Funding Opportunity Number HHS-2016-ACF-ACYF-SR-1197 from the Department of Health and Human Services, Administration for Children and Families. Its contents are solely the responsibility of Lutheran Social Services and do not necessarily represent the official views of the Department of Health and Human Services, Administration for Children and Families.